

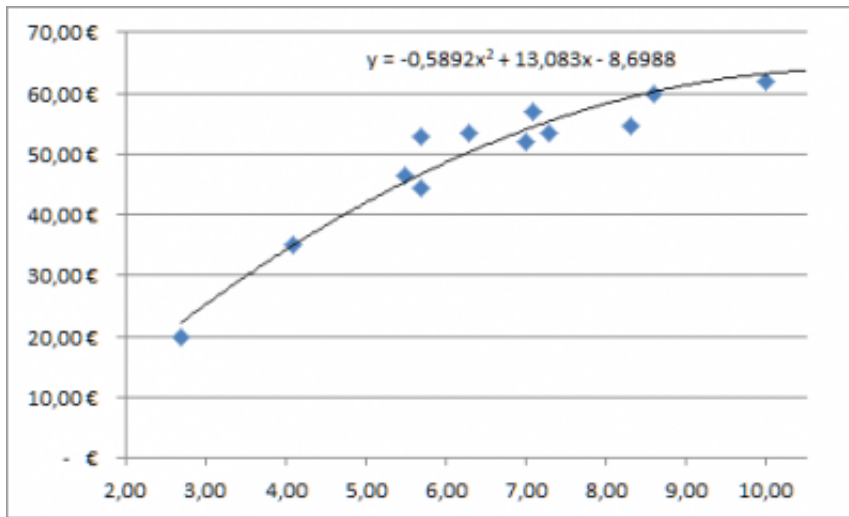
## Most reasonable lift tickets

To determine the price/performance ratio, the determined ski area value (more on this [here](#)) is compared with the prices of the lift tickets. Since the ski area values have not yet been determined completely, it is not yet possible to provide a corresponding ratio.

However, the data are already available for some ski areas, so that they can be compared exemplarily.

Ski area	Ski area value	Ski pass Adult peak season in € 18/19	
		1 day	6 days
Les Trois Vallées	10.0	62.00	306.00
Paradiski	8.6	60.00	305.00
KitzSki (main area)	7.1	57.00	277.00
Mayrhofen-Lanersbach	6.3	53.50	256.50
Serfaus-Fiss-Ladis	7.0	52.00	248.50
Ski Arlberg	8.3	54.50	289.00
Hintertuxer Gletscher	7.3	53.50	256.50
Schmittenhöhe	5.7	53.00	260.00
Skiliftkarussell	4.1	35.00	132.00
Winterberg			
Garmisch Classic	5.7	44.50	247.00
Zugspitze	4.7	46.50	247.00
Fahlenscheid	2.7	20.00	120.00

In the listed ski areas, you receive an average of 1.36 points for every 10 euros paid for a day pass. The highest number is found in the Trois Vallées (1.61), where the enormous size cannot be fully explored within one day. Therefore, the price increase is not linear to the value of the ski area. The following figure shows the relationship between the value of a ski area and the price of a day pass. Ski areas above the trend line are more expensive, ski areas below are cheaper than the average price on the market.



window.respimage &&

window.respimage({ elements: [document.images[document.images.length - 1]] });

In contrast to a simple comparison of piste kilometres and ticket prices, which has often been carried out by various media in the past, the comparison of the Montenius ski area value and ticket prices is a much more accurate method of actually determining in which ski areas one gets particularly much or particularly little for one's money.

To illustrate this, a very small ski area has also been included in the figure. Olpe Fahlenscheid accounts for about 1/250 of the piste kilometres of the Trois Vallées. The day pass should only be about 25 cents if there is a linear correlation between piste kilometres and price. This would neither be possible for the operator nor would it adequately reflect the value of the day pass for the guest. In fact, smaller ski areas have higher costs in relation to the capacity they offer (and thus, the number of skiers they can serve). This fact is also taken into account in the Montenius ski area valuation.